

## STANDBY ELECTRICAL SYSTEM - TROUBLESHOOTING

### 1. General

- A. A troubleshooting chart has been included to aid the maintenance technician in system troubleshooting. Refer to Figure 101.

Figure 101 : Sheet 1 : Standby Electrical System Troubleshooting Chart

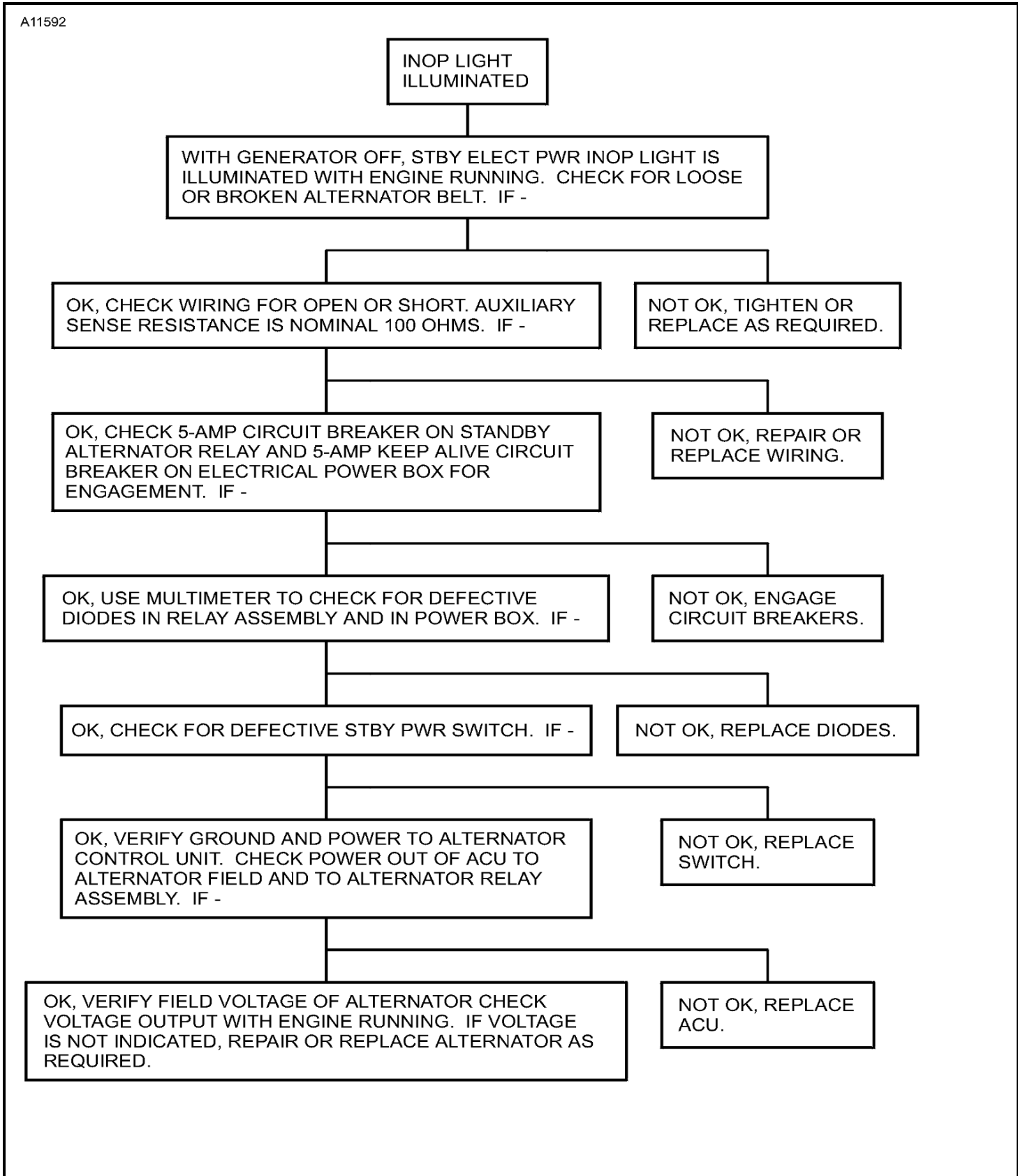


Figure 101 : Sheet 2 : Standby Electrical System Troubleshooting Chart

A11593

